

Bathla



B501/143 South Street Marsden Park NSW

3  2  2 

** Under Construction **

Introducing a limited collection of 2 and 3-bedroom terrace-style apartments at 143 South Street, Marsden Park-offering the perfect balance of space, functionality, and low-maintenance living.

Thoughtfully designed for modern lifestyles, these oversized residences feature generous open-plan layouts and seamless indoor-outdoor flow to private terraces-ideal for entertaining, relaxing, or creating your own outdoor retreat. Perfect for families, professionals, and downsizers seeking extra space without the upkeep of a traditional home.

[For full version visit the website](https://listings.bathla.com.au)

Type : Apartment

Price : Terrace Style

View : <https://listings.bathla.com.au/sale/nsw/western-sydney/marsden-park/residential/apartment/8691321>

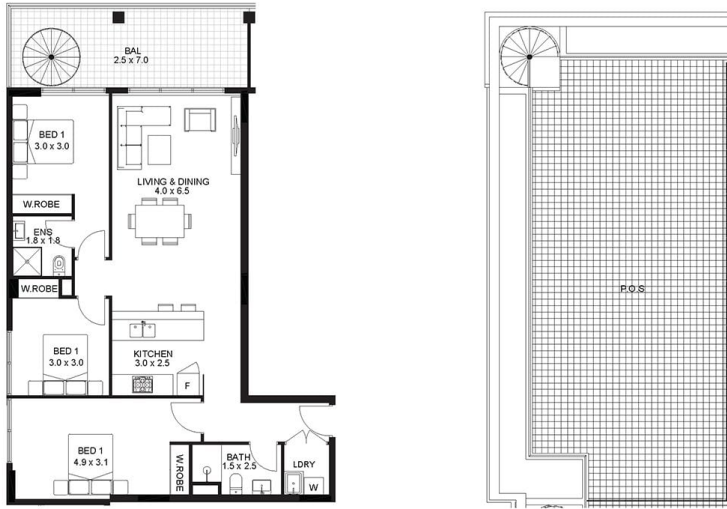
Bathla

Sales Team
1300 228 452

<https://listings.bathla.com.au>

137 Gilba Rd, Girraween NSW 2145
1300228452 sales@bathla.com.au

143-155 SOUTH STREET, MARSDEN PARK
LOT 2



3 BEDROOMS

APARTMENT	UB 501
LOT	55
LEVEL	4
BUILDING	B



Internal Area:	95 m ²
External Area:	17 m ²
Rooftop Area:	78 m ²
Total Area:	190 m ²



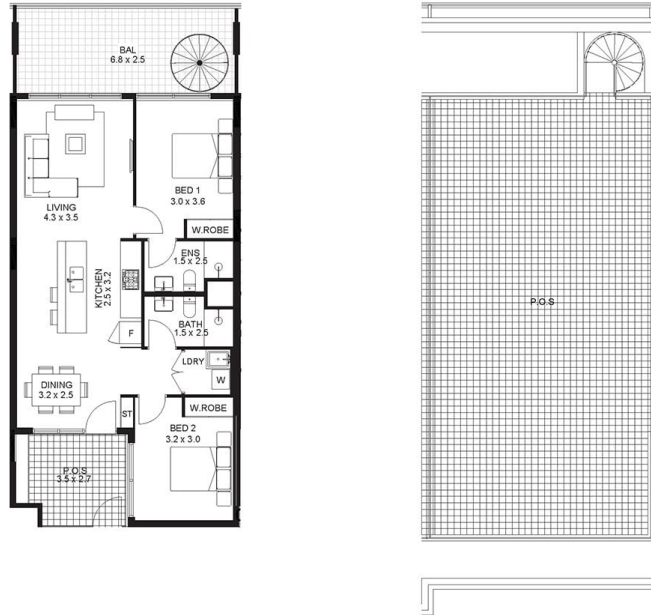
REVISED 22.08.22

Bathla

1300 228 452 | sales@bathla.com.au

Disclaimer: The information and illustrations in this document are indicative only and are subject to the terms of the contract for sale and the strata plan in the contract for sale. Any furniture or fixtures depicted are illustrative only and not part of the property sold. The contract for saleshowings inclusions sold with the property. Purchasers must rely on their enquiries and the information in the contract for sale.

143-155 SOUTH STREET, MARSDEN PARK
LOT 2



2 BEDROOMS

APARTMENT	UA 502
LOT	22
LEVEL	4
BUILDING	A



Internal Area:	76 m ²
External Area:	26 m ²
Rooftop Area:	91 m ²
Total Area:	193 m ²



REVISED 22.08.22

Bathla

1300 228 452 | sales@bathla.com.au

Disclaimer: The information and illustrations in this document are indicative only and are subject to the terms of the contract for sale and the strata plan in the contract for sale. Any furniture or fixtures depicted are illustrative only and not part of the property sold. The contract for saleshowings inclusions sold with the property. Purchasers must rely on their enquiries and the information in the contract for sale.