

Bathla



148 Bridge Street Schofields NSW

4 3 2

A rare opportunity to secure a Torrens Title duplex in one of North West Sydney's fastest-growing suburbs. Thoughtfully designed for modern family living, these brand new homes combine spacious interiors, quality finishes and a location surrounded by everyday convenience.

Positioned in the heart of Schofields, these homes sit just a 5-minute walk to Schofields Train Station, offering exceptional connectivity while remaining close to schools, shopping and parklands.

Property Features

- ? 3 & 4 bedroom Torrens Title duplexes
- ? Spacious open-plan living and dining areas
- ? Contemporary kitchens with quality appliances

[For full version visit the website](https://listings.bathla.com.au)

Type : Townhouse

Price : Duplex | Torrens Title

View : <https://listings.bathla.com.au/sale/nsw/western-sydney/schofields/residential/townhouse/8669212>

Bathla

Sales Team
1300 228 452

<https://listings.bathla.com.au>

137 Gilba Rd, Girraween NSW 2145
1300228452 sales@bathla.com.au



GROUND FLOOR



FIRST FLOOR



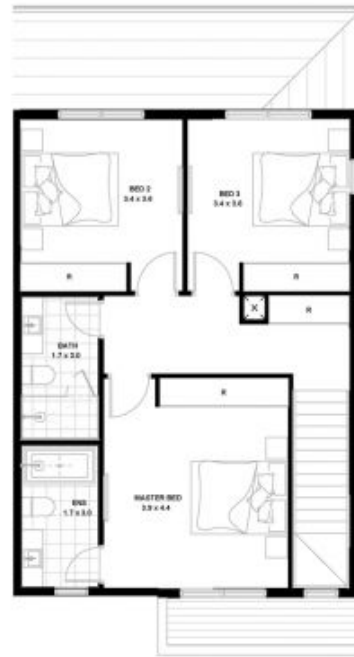
LOT PLAN

NOTE: FLOOR LEVELS ARE SUBJECT TO CHANGE WITH A POSSIBILITY OF INTERNAL STEPS. PENDING RECEIPT OF SURVEY, STRUCTURAL CERTIFICATION, RESIDENTIAL DESIGN CODES, DEVELOPERS COVENANTS & BUILDING CODES AND COUNCIL APPROVALS

LOT 30 20-GERTRUDE PLACE SCHOFIELDS		TOTAL LAND AREA - 159 m²		NORTH 	
		Ground Floor (incl. Garage, Porch and Patio)	75 m²		
		First Floor (incl. Balcony if shown in the plan)	61 m²	6.6 Squares	
		TOTAL AREA:- <small>(GROUND FLOOR + FIRST FLOOR AREA)</small> <small>(SQUARES AND M²)</small>	136 m²	14.6 Squares	
		Open space (incl. Back & Front Courtyard)	84 m²		
<small>DISCLAIMER: THE INFORMATION CONTAINED HEREIN, WHETHER WRITTEN OR GRAPHIC, IS FOR INFORMATION PURPOSES ONLY. IT IS SUBJECT TO CHANGE WITHOUT NOTICE AND IS NOT INTENDED TO CONSTITUTE AN OFFER OR CONTRACT. THE DEVELOPER MAKES NO WARRANTY, REPRESENTATION OR GUARANTEE AS TO THE ACCURACY, COMPLETENESS, OR RELIABILITY OF THE INFORMATION CONTAINED HEREIN. THE DEVELOPER SHALL HAVE NO LIABILITY FOR ANY LOSS OR DAMAGE, INCLUDING BUT NOT LIMITED TO, CONSEQUENTIAL DAMAGES, ARISING FROM THE USE OF OR RELIANCE ON ANY INFORMATION IN THIS DOCUMENT. THE DEVELOPER SHALL HAVE NO LIABILITY FOR ANY LOSS OR DAMAGE, INCLUDING BUT NOT LIMITED TO, CONSEQUENTIAL DAMAGES, ARISING FROM THE USE OF OR RELIANCE ON ANY INFORMATION IN THIS DOCUMENT.</small>					



GROUND FLOOR



FIRST FLOOR



LOT PLAN

NOTE: FLOOR LEVELS ARE SUBJECT TO CHANGE WITH A POSSIBILITY OF INTERNAL STEPS. PENDING RECEIPT OF SURVEY, STRUCTURAL CERTIFICATION, RESIDENTIAL DESIGN CODES, DEVELOPERS COVENANTS & BUILDING CODES AND COUNCIL APPROVALS

*There is no Gas line in this house/lot.

LOT 01 156A BRIDGE STREET SCHOFIELDS		TOTAL LAND AREA - 170 m²		NORTH 	
		Ground Floor (incl. Garage, Porch and Patio)	98 m²		
		First Floor (incl. Balcony if shown in the plan)	74 m²	8.0 Squares	
		TOTAL AREA:- <small>(GROUND FLOOR + FIRST FLOOR AREA)</small> <small>(SQUARES AND M²)</small>	172 m²	18.5 Squares	
		Open space (incl. Back & Front Courtyard)	72 m²		
<small>DISCLAIMER: THE INFORMATION CONTAINED HEREIN, WHETHER WRITTEN OR GRAPHIC, IS FOR INFORMATION PURPOSES ONLY. IT IS SUBJECT TO CHANGE WITHOUT NOTICE AND IS NOT INTENDED TO CONSTITUTE AN OFFER OR CONTRACT. THE DEVELOPER MAKES NO WARRANTY, REPRESENTATION OR GUARANTEE AS TO THE ACCURACY, COMPLETENESS, OR RELIABILITY OF THE INFORMATION CONTAINED HEREIN. THE DEVELOPER SHALL HAVE NO LIABILITY FOR ANY LOSS OR DAMAGE, INCLUDING BUT NOT LIMITED TO, CONSEQUENTIAL DAMAGES, ARISING FROM THE USE OF OR RELIANCE ON ANY INFORMATION IN THIS DOCUMENT. THE DEVELOPER SHALL HAVE NO LIABILITY FOR ANY LOSS OR DAMAGE, INCLUDING BUT NOT LIMITED TO, CONSEQUENTIAL DAMAGES, ARISING FROM THE USE OF OR RELIANCE ON ANY INFORMATION IN THIS DOCUMENT.</small>					