

# Bathla



358 Quakers Road, (nirimba Fields) Quakers Hill NSW

4 3 1

\*\* Ready to Move In \*\*

This brand-new, exclusive house and land package is situated in a rapidly developing suburb, conveniently close to the M7 motorway and Western Sydney University Nirimba Campus. Upon entry, you'll be immediately drawn to the sophistication of this remarkable home, designed to provide all your needs. Don't overlook the opportunity to select the ideal home from a variety of available options.

Key Features:

Open plan living area consisting of the kitchen and family/dining room integrating with outdoor living

[For full version visit the website](https://listings.bathla.com.au)

**Type** : House

**Price** : Double Storey | Set on a Generous Block

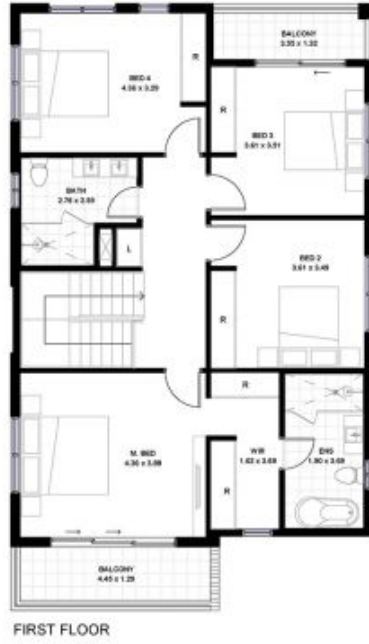
**View** : <https://listings.bathla.com.au/sale/nsw/western-sydney/quakers-hill/residential/house/8569214>

## Bathla

**Sales Team**  
1300 228 452

<https://listings.bathla.com.au>

137 Gilba Rd, Girraween NSW 2145  
1300228452 sales@bathla.com.au



LOT 25  
358 QUAKERS ROAD  
NIRIMBA FIELDS



**TOTAL LAND AREA - 335 m<sup>2</sup> (11.5M X 30.2M)**

Ground Floor (incl. Garage, Porch and Patio)	119 m <sup>2</sup>	12.8 Squares
First Floor (incl. Balcony if shown in the plan)	114 m <sup>2</sup>	12.3 Squares
Open space (incl. Back & Front Courtyard)	216 m <sup>2</sup>	
<b>TOTAL AREA:-</b> (GROUND FLOOR + FIRST FLOOR AREA) (SQUARES AND M <sup>2</sup> )	<b>233 m<sup>2</sup></b>	<b>25.1 Squares</b>



DISCLAIMER: THE INFORMATION CONTAINED HEREIN, WHETHER WRITTEN OR ALTERNATIVE, IS FOR INFORMATION PURPOSES ONLY. IT IS ONLY INDICATIVE AND SUBJECT TO CHANGE. CHANGES CAN BE MADE FOR ANY REASONS, INCLUDING, BUT NOT LIMITED TO, COMPLIANCE WITH COUNCIL APPROVALS, DESIGN VARIATIONS TO ACCORDANCE WITH REQUIREMENTS, COMPLIANCE WITH BULK REGULATIONS, AVAILABILITY OF MATERIALS AND INCLUDED AND UNFORSEEN CONSTRUCTION OBSTACLES. ALL LANDSCAPING, SERVICES, ASPECTS, VIEWS, RESPECTIVES, DRAWINGS, PLANS, FURNISHING SPECIFICATIONS, TILE AND BULBING, CIVIL, ELECTRICAL, PLUMBING, WOODWORK, WINDOW DESIGNING, COULERS AND STYLING DEVICES ARE INDICATIVE ONLY. THE DEVELOPER/BUILDER DOES NOT GIVE ANY WARRANTY OR MAKE ANY REPRESENTATIONS, WHETHER EXPRESS OR IMPLIED, ABOUT THE COMPLETION OR ACCURACY OF ANY INFORMATION IN THIS DOCUMENT OR PROVIDE WITH IT. ALL PURCHASERS SHOULD MAKE THEIR OWN INDEPENDENT ENQUIRIES AS TO THE MATTERS REFERRED TO IN THIS DOCUMENT. THE DEVELOPER/BUILDER DISCLAIMS ANY AND ALL LIABILITY RELATIVE TO, OR RESULTING FROM, THE USE OF, OR THE RELIANCE ON, ANY INFORMATION IN THIS DOCUMENT.